



Repubulika
y'u Rwanda



nISR
NATIONAL INSTITUTE OF
STATISTICS OF RWANDA



Ubushakashatsi ku Buhinzi

2024

Copyright © 2024 National Institute of Statistics of Rwanda (NISR). All rights reserved.

This Agricultural Survey Report is produced by the National Institute of Statistics of Rwanda (NISR). Additional information about this report may be obtained from NISR:

P.O Box : 6139 Kigali, Rwanda

Tel: +250 788 383103

Email: info@statistics.gov.rw

Cover Photo: MINAGRI, March 2024

Recommended citation:

National Institute of Statistics of Rwanda (NISR) Ubushakashatsi ku buhinzi, umwaka w'ubuhinzi 2023-2024



Intangiriro

Iyi ni incamake ya raporo y'ubushakashatsi ku buhinzi bukorwa buri gihembwe cy'ihinga, umwaka w'ubuhinzi wa 2023/2024. Ubu bushakashatsi bwakozwe n'Ikigo cy'Igihugu cy'Ibarurishamibare mu Rwanda (NISR) gifatanije na Minisiteri y'ubuhinzi n'ubworozi (MINAGRI).

Ubushakashatsi ku buhinzi bukubiyemo amakuru y'ibihembwe bitatu by'ingenzi mu buhinzi mu Rwanda. Ibihembwe by'ihinga by'ingenzi birimo Igihembwe A, cyatangiyeye muri Nzeri 2023 kugera muri Gashyantare 2024, Igihembwe B cyatangiyeye muri Werurwe kugeza muri Kamena 2024, n'Igihembwe C cyatangiyeye muri Nyakanga kirangira muri Nzeri 2024. Muri ayo makuru harimo agendanye n'ubuso bwahinzweho, umusaruro wabonetse, ikoreshwa ry'inyongeramusaruro ndetse n'amakuru yerekeranye n'ibindi bikorwa bifasha mu kubungabunga ubutaka no kongera umusaruro.

Aho ubushakashatsi bwakorewe

Ubushakashatsi ku buhinzi bushingiye ku makuru y'ibanze ava mu bahinzi batoranwa hagendewe ku butaka buhingwaho ndetse n'urutonde rw'abahinzi banini¹. Mu mwaka w'ubuhinzi 2023/2024, ubushakashatsi ku buhinzi bukorwa buri gihembwe cy'ihinga bwakorewe mu dupande tw'ibarura 1.200 no mu bahinzi banini 370 mu gihembwe A na 384 mu gihembwe B, bukorwa mu byiciro bibiri; icyiciro cya mbere cyo gutegura imirima no gutera ndetse n'icyiciro cya kabiri cyo gusarura.

Icyiciro cya mbere: Abakarani b'ibarura basuye udupande tw'ibarura n'abahinzi banini, bapima imirima yahinzwe mu rwego rwo kubona ubuso bwahinzwe mu gihembwe. Muri iki cyiciro hakusanywa amakuru ku butaka bwahinzwe, ibihingwa byatewe, n'ingamba zo kurwanya isuri ku mirima zakozwe.

Icyiciro cya kabiri: Hagendewe ku makuru yakusanyijwe mu cyiciro cya mbere, abakarani b'ibarura basuye abahinzi bose bafite imirima irimo ibihingwa byatewe n'ibizatanga umusaruro muri icyo gihembwe. Hakusanywa amakuru ku byakoreshejwe mu buhinzi (Imbutu, Ifumbire, Imiti yo kurwanya udukoko, ...), umusaruro wabonetse, ikoreshwa ryawo, n'ibindi bikorwa byakozwe mu buhinzi.

Ubu bushakashatsi butanga amakuru ku bihingwa bihingwa mu Rwanda ukuyemo ikawa n'icyayi. Amakuru ku cyayi n'ikawa atangwa n'Ikigo cy'Igihugu Gishinzwe Guteza Imbere Iyoherezwa mu Mahanga ry'Ibikomoka ku Buhinzi n'Ubworozi (NAEB), akusanywa mu bikorwa bisanzwe byo gukurikirana umusaruro w'ikawa n'icyayi.

Ibipimo by'ingenzi byavuye mu bushakashatsi

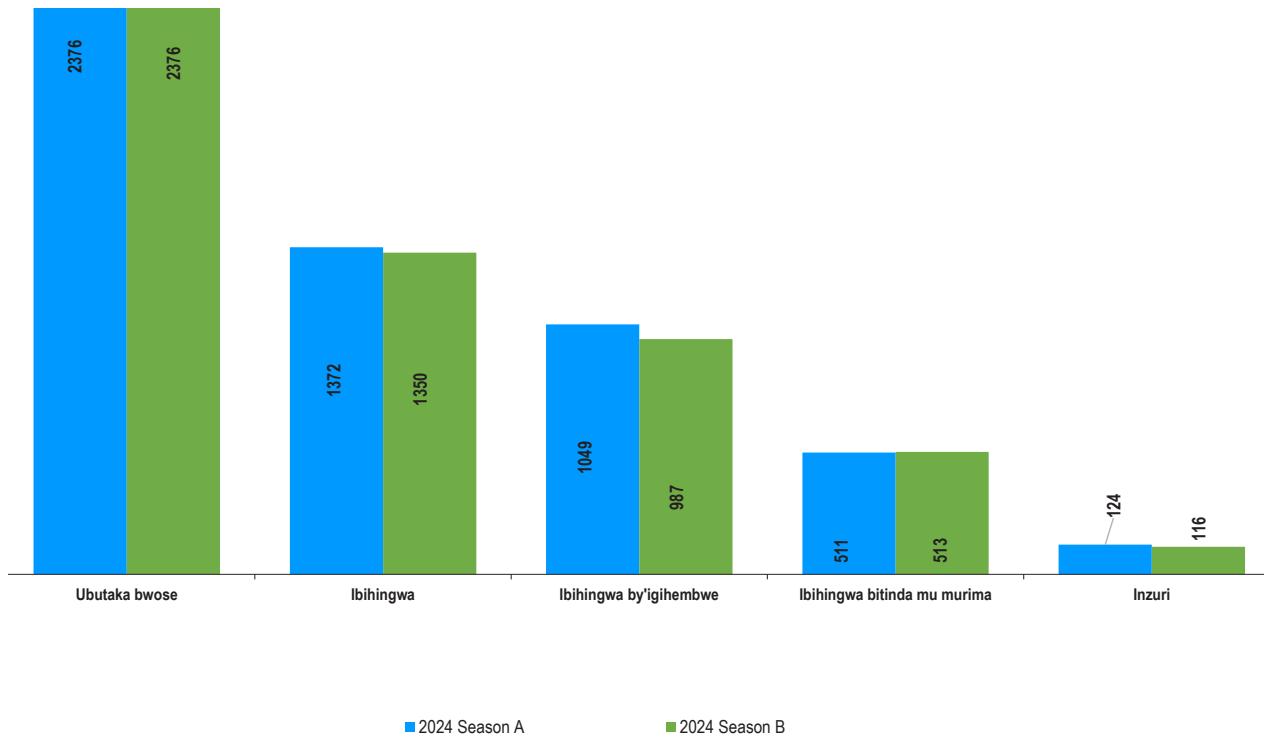
Ibipimo by'ingenzi by'ubushakashatsi ku buhinzi mu mwaka w'ubuhinzi wa 2023-2024 bigaragaza uko ubuhinzi bwari buhagaze mu bihembwe bitatu. Harimo Imikoreshereze y'ubutaka, ubuso bwahinzweho, ingano y'umusaruro wabonetse, ikoreshwa ry'inyongeramusaruro, n'ibindi bikorwa byakozwe mu buhinzi harimo kuhira imyaka, ibikorwa byo kurwanya isuri, n'ikoreshwa ry'imashini.

a. Imikoreshereze y'ubutaka

Muri 2024, ubuso bw'ubutaka bw'igihugu ni hegitari miliyoni 2,376. Mu gihembwe A, Ubutaka bwakoreshejwe mu buhinzi bwari hegitari miliyoni 1,372 bingana 57,7% by'ubutaka bwose mu gihe hegitari miliyoni 1,350 bingana 56,8% aribwo bwakoreshejwe mu gihembwe B. Ibihingwa byera mu gihembwe byari ku buso bungana na hegitari miliyoni 1,049 mu gihembwe A mu gihe byari kuri hegitari ibihumbi 987 mu gihembwe B.

¹ Umuhinzi munini: Umuhinzi uhiga ku buso bufite hegitari 10 kuzamura. Ashobora kuba umuhinzi ku giti cye, ishyirahamwe, cyangwa ikigo.

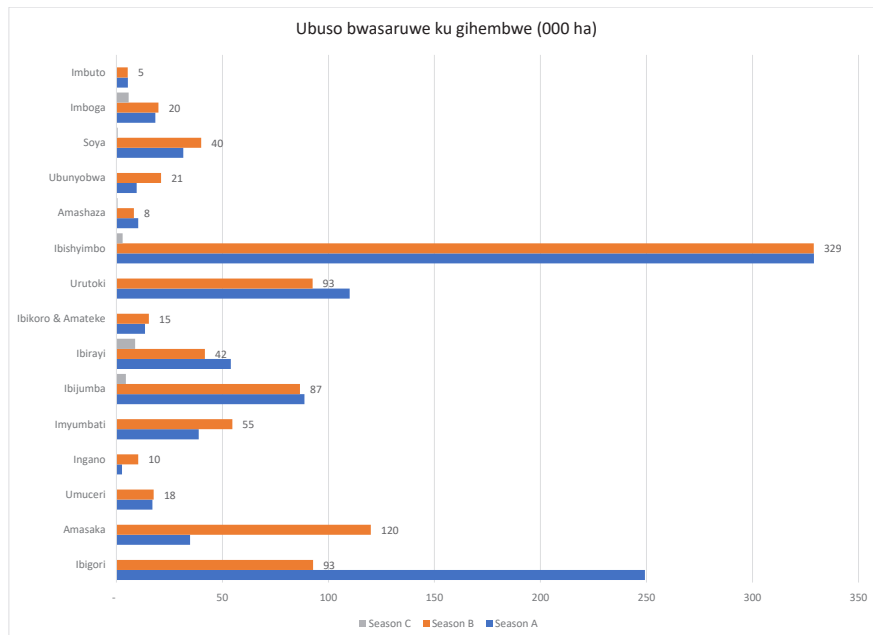
Ikoreshwa ry'ubutaka



b. Ubuso bwasaruwe

Mu mwaka wa 2024, ibishyimbo nibyo byahinzwe ku buso bunini: hegitari 328.961 mu gihembwe A na hegitari 328.858 mu gihembwe B. Ibigori biza ku mwanya wa kabiri: hegitari 249.276 mu gihembwe A na hegitari 92.749 mu gihembwe B.

Ubuso bwasaruwe



c. Umusaruro wa 2023

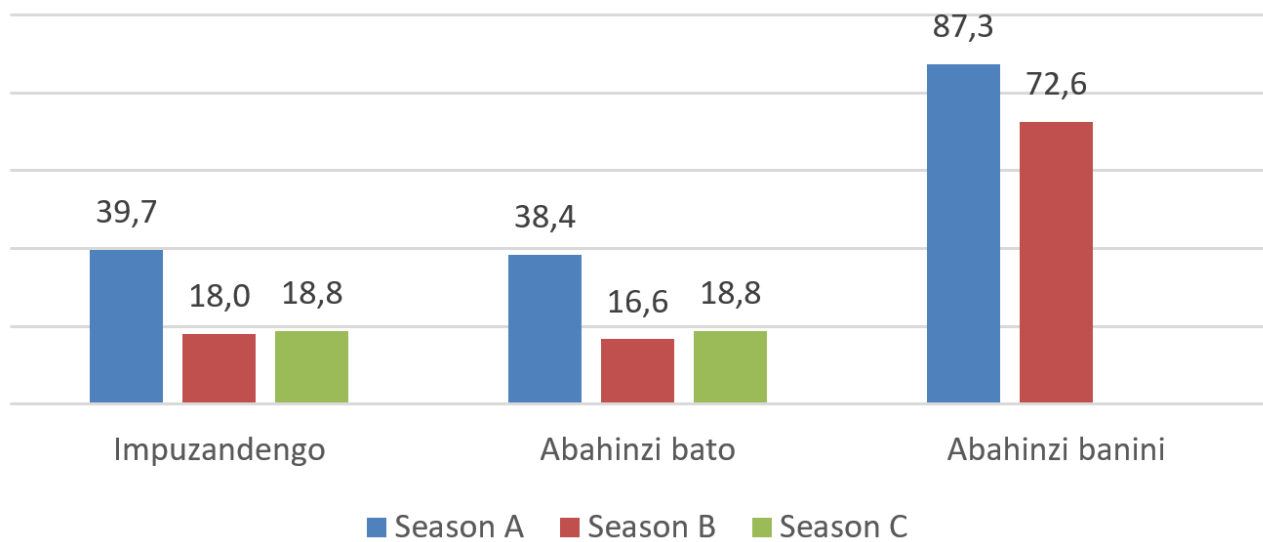
Ibihingwa	Umusaruro muri toni		
	Igihembwe A	Igihembwe B	Igihembwe C
Ibigori	507.985	119.101	-
Amasaka	47.452	140.314	-
Umuceri	69.098	72.834	-
Ingano	3.371	13.045	-
Imyumbati	518.044	783.294	-
Ibijumba	692.945	666.814	38.293
Ibirayi	460.830	285.596	80.929
Ibikoro & Amateke	91.306	112.370	-
Ibitoki bitekwa	587.981	515.798	-
Ibitoki by'imineke	133.317	152.891	-
Ibitoki byo kwenga	573.386	473.863	-
Ibishyimbo	233.142	242.239	3.046
Amashaza	7.042	4.628	549
Ubunyobwa	5.328	9.062	4
Soya	19.171	17.051	483
Imboga	145.933	177.549	65.980
Imbutu	25.250	27.219	-

Imbonerahamwe iri hejuru yerekena umusaruro wabonetse mu Rwanda ku bihingwa by'ingenzi byahinzwe mu mwaka wa 2023/2024 mu bihembwe bitatu by'ihinga.

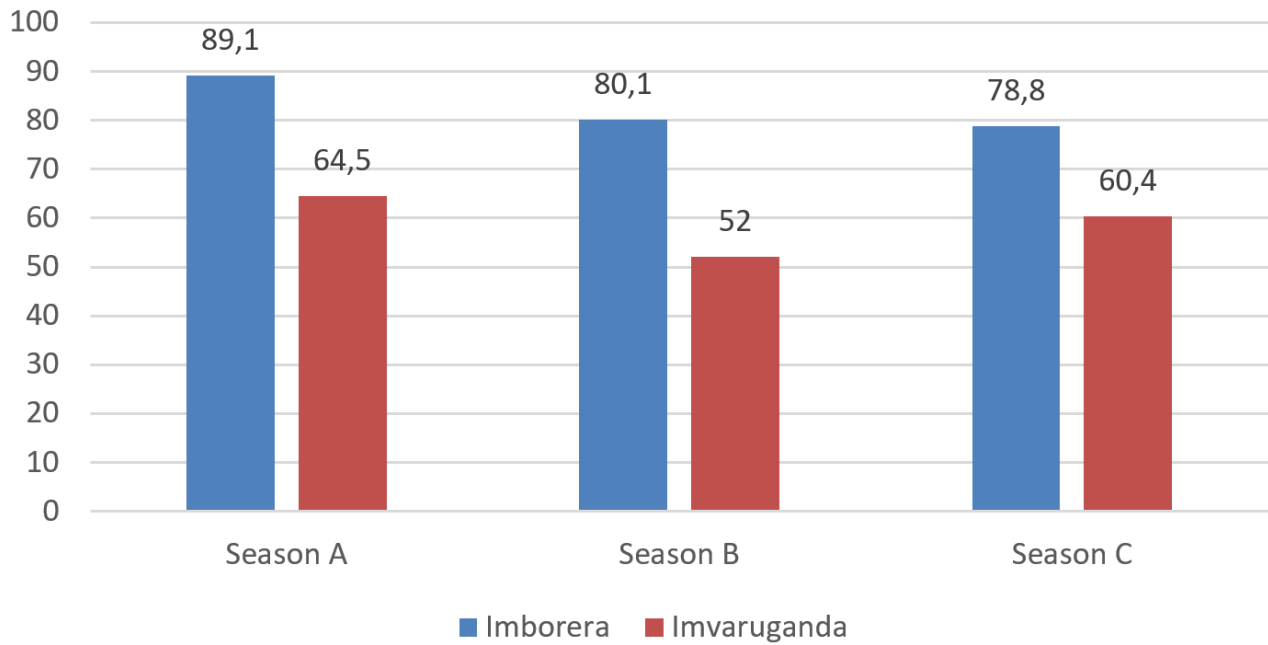
Bigaragara ko umusaruro mwinshi w'ibihingwa uboneka mu bihembwe A na B, naho igihembwe C kirangwa n'umusaruro muke, uturuka ku bihingwa byerera igihe gito bihingwa mu bishanga cyangwa ahantu hashobora kuhirwa. Ibihingwa nk' imyumbati, ibijumba, imboga, n'ibitoki bifite uruhare rukomeye mu kwihaza mu biribwa mu gihugu.

d. Ikoreshwa ry'Imbutu z'indobanure

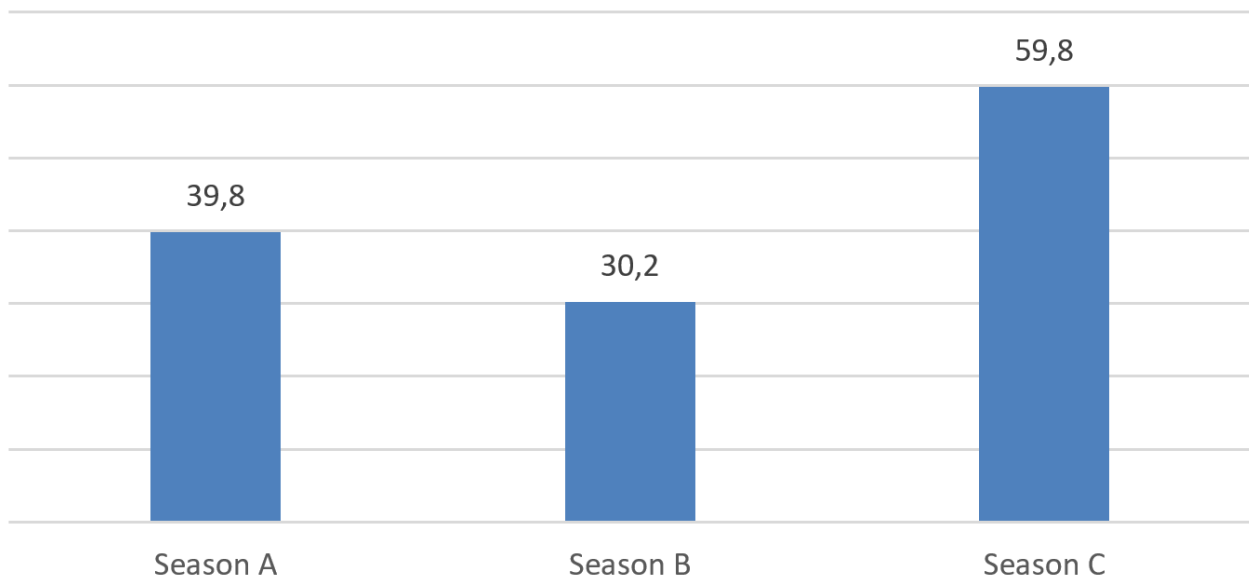
Muri 2024, abahinzi 39,7% nibo bateye imbuto y'indobanure mu gihembwe A, mugihe mu gihembwe B bari 18,0% naho mu gihembwe cya C ndetse na 18,8%.



e. Ifumbire n'imiti

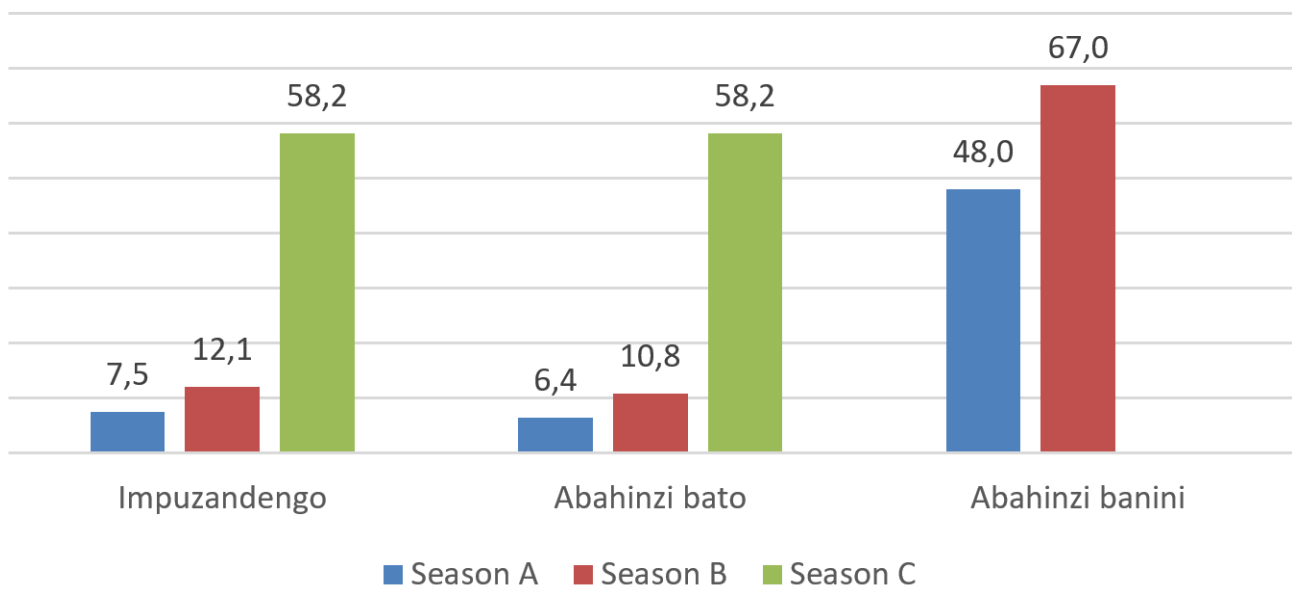


Mu gihembwe A, 89,1% by'abahinzi bakoresheje ifumbire y'imborera naho 64,5% by'abahinzi bakoresheje ifumbire mvaruganda, Mu gihembwe B, 80,1% by'abahinzi bakoresheje ifumbire y'imborera naho 52% by'abahinzi bakoresheje ifumbire mvaruganda. Mu gihembwe C, 78,8% by'abahinzi bakoresheje ifumbire y'imborera naho 60,4% by'abahinzi bakoresheje ifumbire mvaruganda.



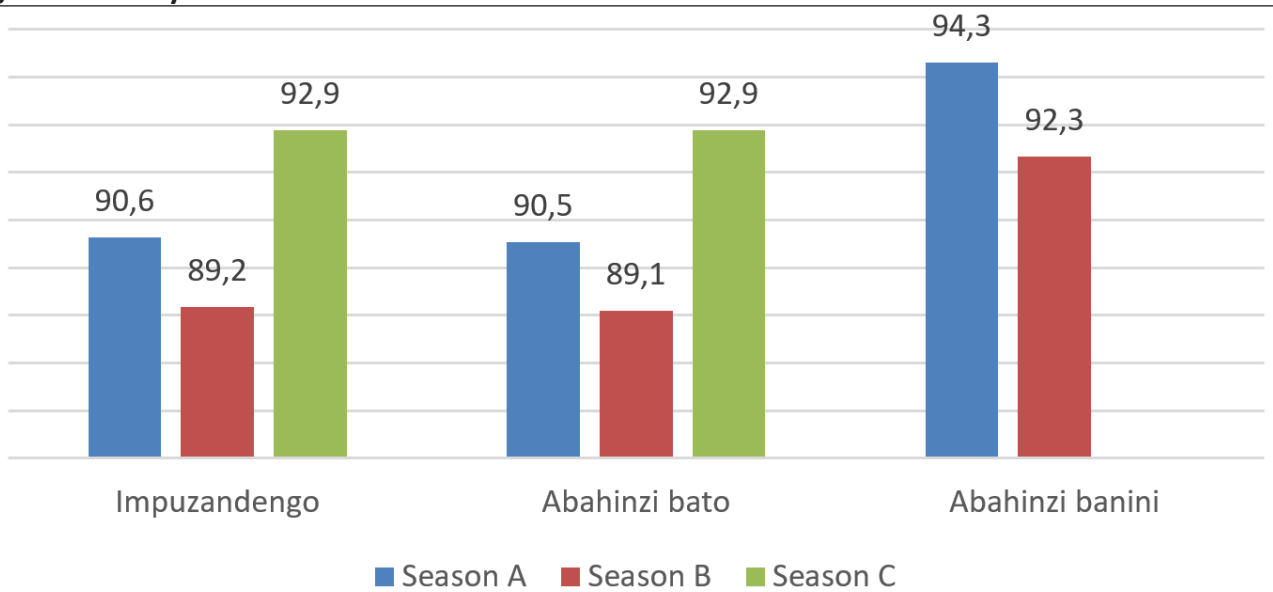
Mu mwaka wa 2024, abahinzi 39,8% bakoresheje imiti yo kurwanya udukoko mu myaka mu gihembwe A, ugereranije na 30,2% mu gihembwe B, na 59,8 % mu gihembwe C.

f. Ibikorwa byo kuhira imyaka



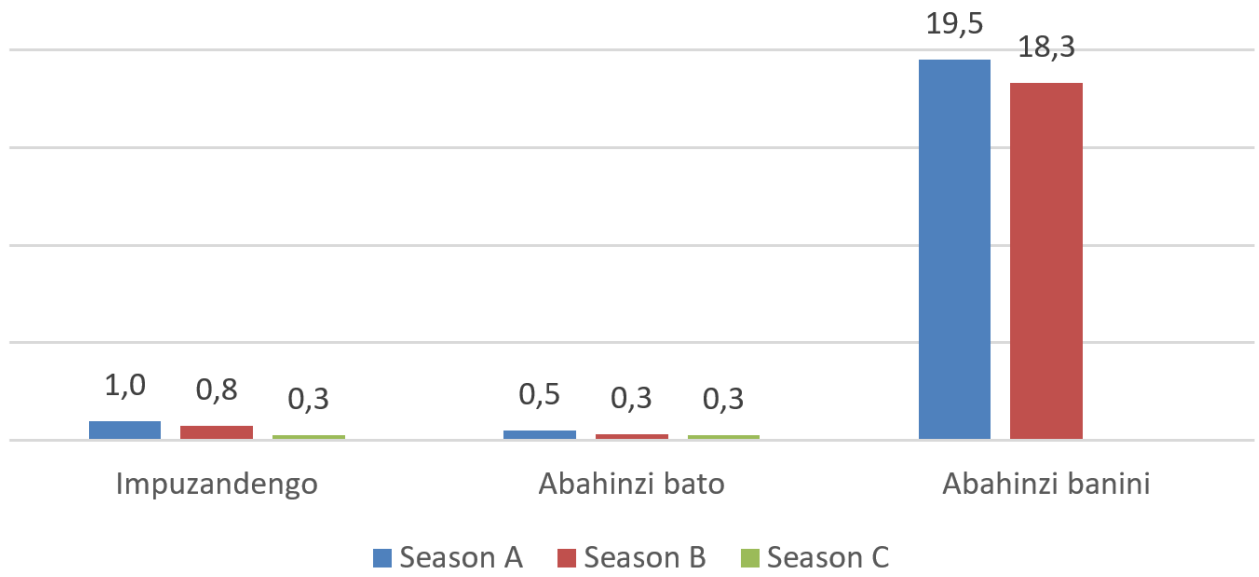
Mu mwaka wa 2024, mu gihembwe A, 7,5% by’abahinzi bakoresheje uburyo bwo kuhira imyaka, mu gihe bari 12,1% by’abahinzi mu gihembwe B na 58,2% mu gihembwe C. Muri rusange abahinzi banini bakoresheje uburyo bwo kuhira imyaka kuruta abahinzi bato; ibi biterwa nuko kuhira imyaka bisaba ubushobozi bwisumbuye.

g. Kurwanya isuri



Mu mwaka wa 2024, mu gihembwe A, 90,6% by’abahinzi bakoze ibikorwa byo kurwanya isuri ku mirima yabo, mu gihe ari 89,2% by’abahinzi mu gihembwe B na 92,9% mu gihembwe C. Nta tandukaniro rinini rigaragara mu kurwanya isuri hagati y’abahinzi banini n’abahinzi bato.

h. Gukoresha imashini mu buhinzi



Mu mwaka wa 2024, mu gihembwe A, 1% by'abahinzi nibo bakoresheje imashini n'ibindi bikoresho bihinga, ugereranije na 0,8% by'abahinzi mu gihembwe B na 0,3% mu gihembwe C. Bitewe nuko gukoresha imashini zihinga bihenze, abahinzi banini nibo bitabira cyane gukoresha izi mashini gusa nabo imibare iracyari hasi nkuko bigaragara.

UMUGEREKA

Icyegeranyo cy'ibipimo by'ingenzi kuva 2022 kugera 2024

Ibipimo by'ingenzi bya SAS	SAS 2022			SAS 2023			SAS 2024		
	Igihebwe			Igihebwe			Igihebwe		
	A	B	C	A	B	C	A	B	C
Ubuso bwahinzwe ku bihingwa by'ingenzi (Ha)									
Ibigori	219.683	81.339	-	226.982	93.927	-	249.435	92.944	
Amasaka	37.469	139.793	-	38.979	121.079	-	34.720	120.005	
Umuceri	15.840	16.517	-	16.135	16.678	-	17.173	17.994	
Ingano	3.495	8.482	-	2.975	10.375	-	2.618	10.294	
Imyumbati	186.204	152.470	-	239.221	159.089	-	251.019	172.596	
Ibijumba	97.771	92.056	5.079	106.670	96.231	4.235	95.683	97.289	4.429
Ibirayi	56.442	52.858	10.458	55.613	48.210	10.540	54.048	41.836	8.846
Ibikoro & Amateke	40.424	19.245	-	21.066	16.015	-	24.766	16.725	
Urutoki	259.505	213.322	-	255.290	258.094	-	273.223	258.564	
Ibitoki bitekwa	96.434	73.554	-	96.262	87.735	-	102.458	90.123	
Ibitoki by'imineke	36.598	37.511	-	37.009	54.000	-	44.094	48.809	
Ibitoki byo kwengamo inzoga	126.472	102.257	-	122.019	116.359	-	126.671	119.632	
Ibishyimbo	362.439	268.634	3.292	312.279	309.489	3.476	329.001	329.112	2.892
Amashaza	10.872	7.034	581	10.475	8.383	459	10.245	8.248	527
Ubunyobwa	15.144	19.545	-	11.191	17.745	-	9.563	21.085	
Soya	26.996	37.251	1.034	29.778	40.235	759	31.515	40.059	576
Imboga	18.721	16.473	5.097	16.758	19.164	5.233	19.142	20.161	5.738
Imbutu	10.914	10.373	-	10.131	10.507	-	10.332	10.463	
Ubuso bwasaruwe ku bihingwa by'ingenzi (Ha)									
Ibigori	218.689	81.282	-	224.976	93.816	-	249.276	92.749	
Amasaka	37.469	139.792	-	38.935	121.054	-	34.719	120.005	
Umuceri	15.779	16.474	-	16.070	16.603	-	16.973	17.578	
Ingano	3.495	8.482	-	2.891	10.375	-	2.617	10.294	
Imyumbati	45.418	48.494	-	45.182	49.655	-	38.833	54.679	
Ibijumba	97.767	86.589	5.079	90.657	83.212	4.235	88.708	86.580	4.429
Ibirayi	56.442	52.844	10.458	55.583	48.205	10.540	53.957	41.716	8.846
Ibikoro & Amateke	13.231	15.928	-	13.371	13.621	-	13.482	15.334	
Urutoki	108.476	83.314	-	107.411	88.361	-	109.985	92.501	
Ibitoki bitekwa	39.729	24.565	-	39.234	28.294	-	40.365	30.323	
Ibitoki by'imineke	15.927	12.513	-	15.459	13.068	-	15.503	13.442	
Ibitoki byo kwengamo inzoga	52.820	46.236	-	52.718	46.998	-	54.118	48.737	
Ibishyimbo	362.438	268.628	3.292	312.160	309.410	3.476	328.961	328.858	2.892
Amashaza	10.872	7.034	581	10.472	8.383	459	10.244	8.245	527
Ubunyobwa	15.118	19.545	-	11.191	17.745	-	9.563	21.086	
Soya	26.996	37.229	1.034	29.701	40.231	759	31.513	39.999	576
Imboga	18.298	15.777	5.097	16.382	17.854	5.233	18.322	19.842	5.738
Imbutu	3.402	4.213	-	3.579	4.625	-	5.378	5.346	

Icyegeranyo cy'ibipimo by'ingenzi kuva 2022 kugera 2024

Ibipimo by'ingenzi bya SAS	SAS 2022			SAS 2023			SAS 2024		
	Igihebwe			Igihebwe			Igihebwe		
	A	B	C	A	B	C	A	B	C
Umusaruro w'ibihingwa by'ingenzi (MT)									
Ibigori	348.907	109.615	-	390.879	117.613	-	507.985	119.101	
Amasaka	45.016	147.411	-	46.296	139.425	-	47.452	140.314	
Umuceri	67.002	68.072	-	63.688	69.940	-	69.098	72.834	
Ingano	4.019	9.858	-	3.527	13.129	-	3.371	13.045	
Imyumbati	637.856	737.284	-	608.693	736.686	-	518.044	783.294	
Ibijumba	694.320	649.445	28.980	667.598	620.185	24.595	692.945	666.814	38.293
Ibirayi	486.075	331.016	90.916	454.355	326.677	83.981	460.830	285.596	80.929
Ibikoro & Amateke	85.245	117.647	-	85.259	106.665	-	91.306	112.370	
Urutoki	1.192.331	1.016.137	-	1.219.408	1.089.377	-	1.294.683	1.142.552	
Ibitoki bitekwa	545.588	450.427	-	555.973	493.865	-	587.981	515.798	
Ibitoki by'imineke	126.838	145.753	-	129.371	149.266	-	133.317	152.891	
Ibitoki byo kwengamo inzoga	519.904	419.956	-	534.065	446.246	-	573.386	473.863	
Ibishyimbo	235.818	210.290	3.381	197.212	244.194	3.485	233.142	242.239	3.046
Amashaza	8.247	5.373	445	6.834	4.822	461	7.042	4.628	549
Ubunyobwa	5.445	10.172	-	4.687	8.509	-	5.328	9.062	
Soya	13.741	19.530	785	11.771	17.288	563	19.171	17.051	483
Imboga	142.604	175.205	55.355	132.699	171.530	73.504	145.933	177.549	65.980
Imbutu	21.261	26.872	-	22.556	26.084	-	25.250	27.219	
Umusaruro w'ibihingwa by'ingenzi (t/ha)									
Ibigori	1,6	1,3	-	1,7	1,3	-	2,0	1,3	
Amasaka	1,2	1,1	-	1,2	1,2	-	1,4	1,2	
Umuceri	4,2	4,1	-	4,0	4,2	-	4,1	4,1	
Ingano	1,2	1,2	-	1,2	1,3	-	1,3	1,3	
Imyumbati	14,0	15,2	-	13,5	14,8	-	13,3	14,3	
Ibijumba	7,1	7,5	5,7	7,4	7,5	5,8	7,8	7,7	8,6
Ibirayi	8,6	6,3	8,7	8,2	6,8	8,0	8,5	6,8	9,1
Ibikoro & Amateke	6,4	7,4	-	6,4	7,8	-	6,8	7,3	
Urutoki	11,0	12,2	-	11,4	12,3	-	11,8	12,4	
Ibitoki bitekwa	13,7	18,3	-	14,2	17,5	-	14,6	17,0	
Ibitoki by'imineke	8,0	11,6	-	8,4	11,4	-	8,6	11,4	
Ibitoki byo kwengamo inzoga	9,8	9,1	-	10,1	9,5	-	10,6	9,7	
Ibishyimbo	0,7	0,8	1,0	0,6	0,8	1,0	0,7	0,7	1,1
Amashaza	0,8	0,8	0,8	0,7	0,6	1,0	0,7	0,6	1,0
Ubunyobwa	0,4	0,5	-	0,4	0,5	-	0,6	0,4	
Soya	0,5	0,5	0,8	0,4	0,4	0,7	0,6	0,4	0,8
Imboga	7,8	11,1	10,9	8,1	9,6	14,0	8,0	8,9	11,5
Imbutu	6,3	6,4	-	6,3	5,6	-	4,7	5,1	

Icyegeranyo cy'ibipimo by'ingenzi kuva 2022 kugera 2024

	SAS 2022			SAS 2023			SAS 2024		
	Igihebwe			Igihebwe			Igihebwe		
	A	B	C	A	B	C	A	B	C
Ibyakoreshejwe kugirango haboneke umusaruro: % ry'abahinzi									
Imbuta z'indobanure	33,1	8,7	26,1	37,1	20,8	20,7	39,7	18	18,8
Ifumbire y'imborera	69,7	57,9	82,3	87,9	83,4	83,7	89,1	80,1	78,8
Ifumbire mvaruganda	38,6	27,5	71,5	59,6	51,6	74,5	64,5	52	60,4
imiti yo kurwanya udukoko	19,8	15,9	70,1	34,5	29,7	69,3	39,8	30,2	59,8
Uburyo bw'imihingire: % ry'abahinzi									
Kuhira	8,2	8,0	62,9	10,3	9,6	64,6	7,5	12,1	58,2
Kurwanya isuri	92,1	91,4	95,9	92,1	91,6	94,8	90,6	89,2	92,9
Imikoreshereze y'ubutaka									
Ubutaka bwose bw'igihugu (,000Ha)	2.377,1	2.377,1	-	2.377,1	2.377,1	-	2.376,3	2.376,3	-
Ubutaka bw'ubuhinzi (,000Ha)	1.402,0	1.393,2	-	1.367,5	1.344,6	-	1.372,0	1.349,7	-
Ijanisha ry'ubuso bw'Ubutaka bw'ubuhinzi	59,0	58,6	-	57,5	56,6	-	57,7	56,8	-
Ubuso bw'ibihingwa bitinda mu murima (,000Ha)	555,9	544,6	-	542,5	540,0	-	511,2	513,3	-
Ubuso bw'inzuri/Ibikuyu (,000Ha)	135,2	133,0	-	126	124,3	-	124,5	115,9	-
Ubuso bw'ibihingwa byerera igihembwe (,000Ha)	1.067,2	1.013,9	-	1.000	982,7	-	1.049,1	987,0	-
Ubutaka buraje by'igihe gito (,000Ha)	94,7	125,1	-	112	117,6	-	103,5	127,9	-
Ubutaka bw'Ubwatsi n'ubworozi bw'igihe gito (,000Ha)	10,1	12,8	-	11	10,2	-	9,8	11,0	-