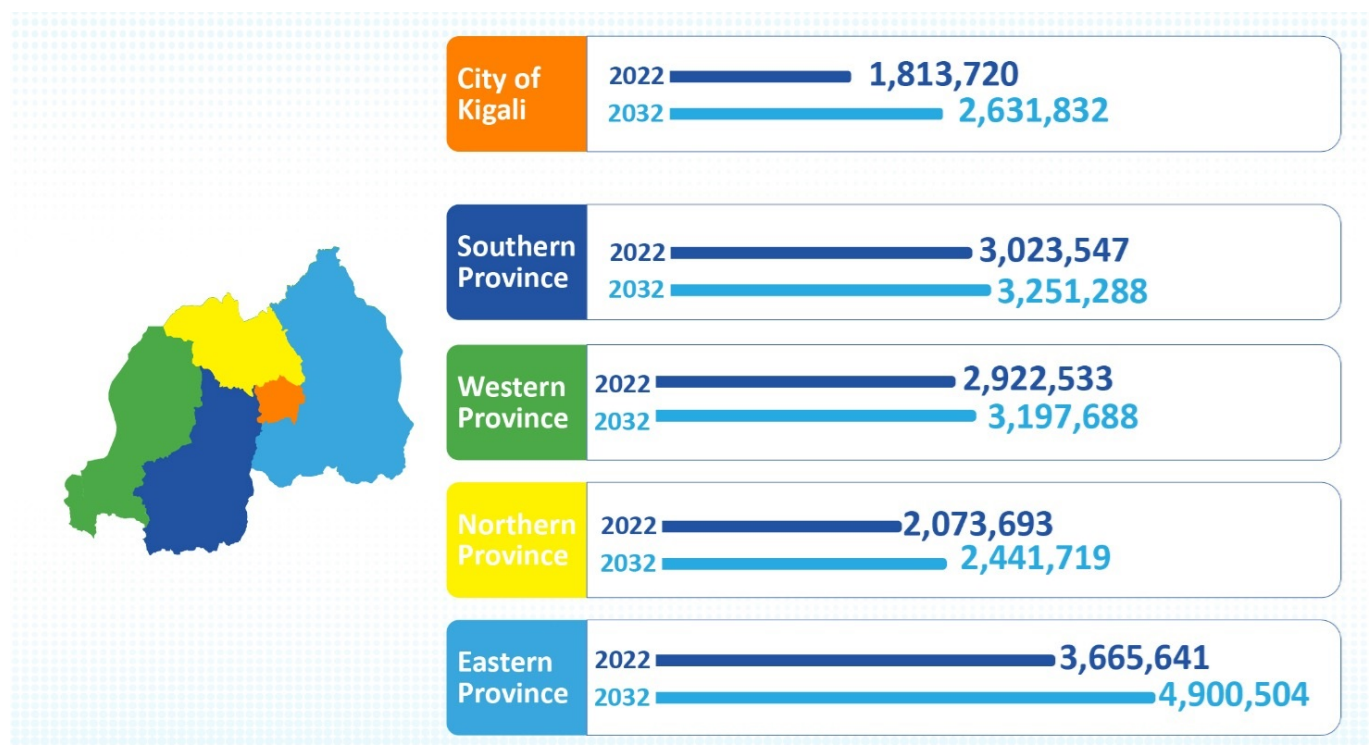


Kigali City's population will increase from current 1.8 million people, reaching a population of 2,6 million people by 2032. The projection is based on current population trends.



Besides other publications from the fifth Population and Housing Census of Rwanda, these subnational Population projections at Province and District level, are among publications produced by NISR from the RPHC 2022.

To produce these subnational projections, all the three components of demographic change fertility, mortality, migration have been taken into account. The base population is the mid-year population in 2022. There were no adjustment done because all the assessments we did showed that the data was of good quality (GRPOPY, different indices used to evaluate the age reporting, etc ). Subnational population projections were derived from the National projections done just after the 2022 PHC the medium scenario.

## Reference documents (Excel)

- [CoK 5 yrs age.xlsx \(xlsx, 13.59 KB\)](#)

LAST UPDATED: 23 Feb 2025

- [Southern Prov 5 yrs age.xlsx \(xlsx, 13.58 KB\)](#)  
LAST UPDATED: 23 Feb 2025
- [Western Province 5yrs agegroup.xlsx \(xlsx, 13.58 KB\)](#)  
LAST UPDATED: 23 Feb 2025
- [Northern Prov 5 yrs age.xlsx \(xlsx, 13.59 KB\)](#)  
LAST UPDATED: 23 Feb 2025
- [Eastern Prov 5 yrs age.xlsx \(xlsx, 13.73 KB\)](#)  
LAST UPDATED: 23 Feb 2025

## Related publications

[\*\*Rwanda Subnational Population Projections by Districts \(2023-2032\)\*\*](#)

## Data source

[\*\*Fifth Population and Housing Census - 2022\*\*](#)

[Save as PDF](#) 